



SATPURUSH MAHALAXMI GROUP

a company committed to quality

7796888838

9923888838

Address : 42/20, Near Belekar Estate,
Open air Hall, Moira Bastora, **Bardez - Goa.**

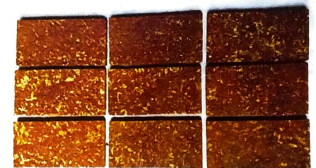
website : www.satpurushmahalaxmi.com

M/s Satpurush Tiles Merchants & Mahalaxmi Agencies

Leading Building Materials Supplier in Goa

M/s Satpurush Tiles Merchants established in 1973 & Mahalaxmi Agencies in 1999, is now Leading Building Material supplier in Goa. we offers the entire range of Construction Material such as centering. Tiles, Bricks, Construction Chemicals, Cement Blocks, Cement, Steel & Pipe, and Hardware etc. from popular and reputed brands. Be assured of transparent billing Quality and Best price when you order from us.

In order to construct a strong and sturdy building one needs to make use of high quality building material. In the absence of high grade raw materials the foundation of a building can never be strong. So in order to offer a tough foundation to a structure you must look for a trusted building material supplier.





**SATPURUSH
MAHALAXMI
GROUP**

a company committed to quality



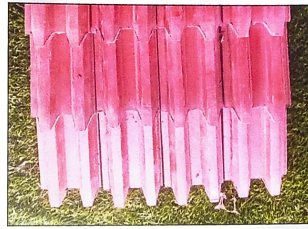
Half Round



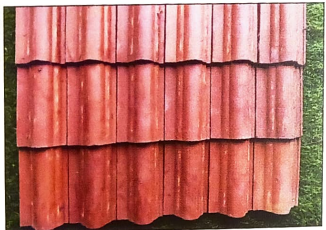
Delux Bamboo



Bottle Half Round



Rocket Tiles



Archana Tiles



Japan Dutch



Celing Tiles



Taylor Tiles



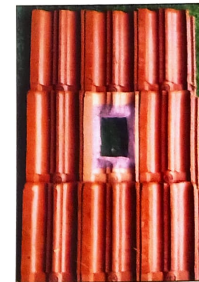
Portuguese Tiles



Mini Tiles



Double Pyramid



Half Glass Tiles



Full Glass Tiles

7796888838 | 9923888838

website : www.satpurushmahalaxmi.com

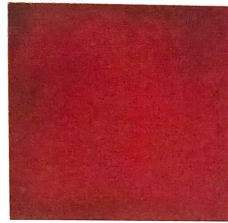


**SATPURUSH
MAHALAXMI
GROUP**

a company committed to quality



PLAIN 9X3



PLAIN 9X9



EDGE CUT 9X3



SMOKE TILE-SINGLE



HOLLOW BLOCK



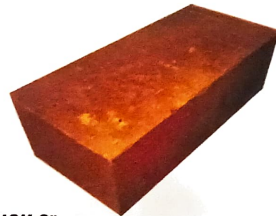
MAT 8X4



ROOFING TILE



NORMAL RIDGE



**BRICK 9"
BRICK 12"**

7796888838 | 9923888838

website : www.satpurushmahalaxmi.com



**SATPURUSH
MAHALAXMI
GROUP**

a company committed to quality

AMBER DESIGN

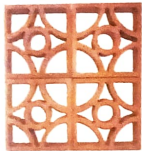
Size : 8x8 Inch

Thickness : 2.5"

Weight : 2.5 Kg.

No. of Jaali Per Box : 4 Pcs

Requirement Per Sft. 2.25 Nos.



OPEL DESIGN

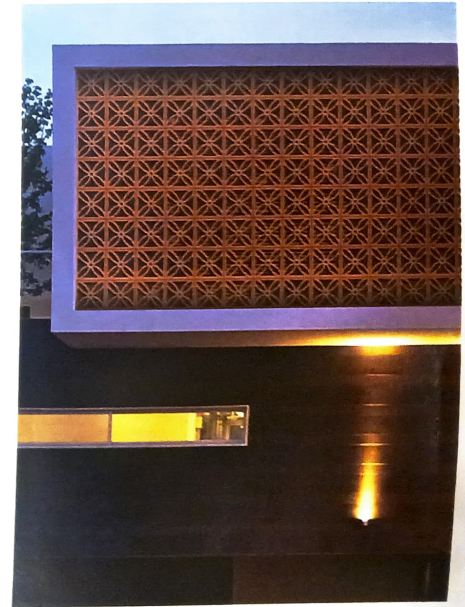
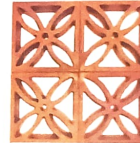
Size : 8x8 Inch

Thickness : 2.5"

Weight : 2.5 Kg.

No. of Jaali Per Box : 4 Pcs

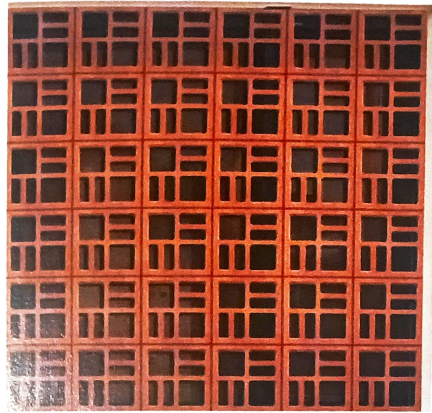
Requirement Per Sft. 2.25 Nos.





**SATPURUSH
MAHALAXMI
GROUP**

a company committed to quality



FOUR PETAL DESIGN

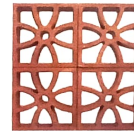
Size : 8x8 Inch

Thickness : 2.5"

Weight : 2.5 Kg.

No. of Jaali Per Box : 4 Pcs

Requirement Per Sft. 2.25 Nos.



SQUARE DESIGN

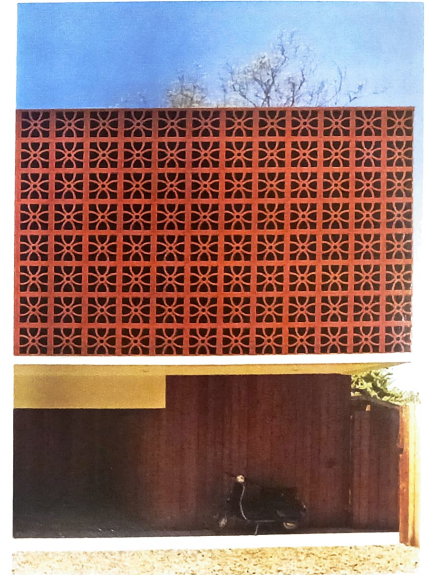
Size : 8x8 Inch

Thickness : 2.5"

Weight : 2.5 Kg.

No. of Jaali Per Box : 4 Pcs

Requirement Per Sft. 2.25 Nos.

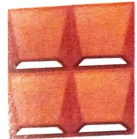


7796888838 | 9923888838

website : www.satpurushmahalaxmi.com

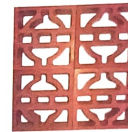


**SATPURUSH
MAHALAXMI
GROUP**
a company committed to quality



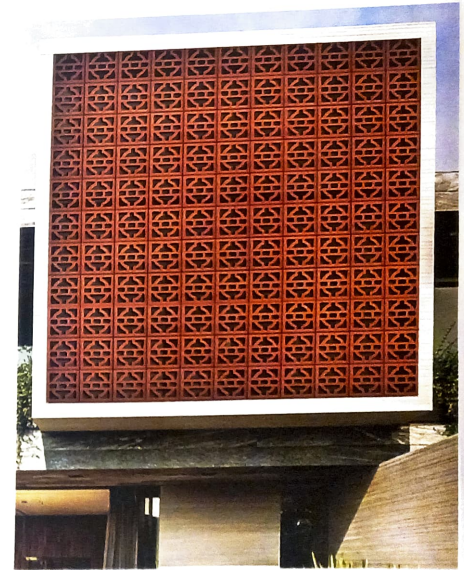
PEARL DESIGN

Size : 8x8 Inch
Thickness : 2.5"
Weight : 2.5 Kg.
No. of Jaali Per Box : 4 Pcs
Requirement Per Sft. 2.25 Nos.



CAM DESIGN

Size : 8x8 Inch
Thickness : 2.5"
Weight : 2.5 Kg.
No. of Jaali Per Box : 4 Pcs
Requirement Per Sft. 2.25 Nos.

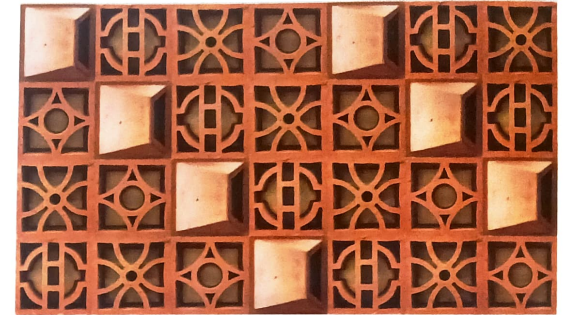
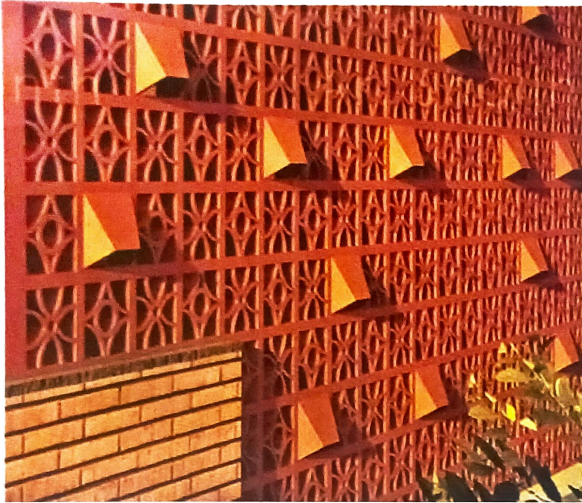


7796888838 | 9923888838

website : www.satpurushmahalaxmi.com



**SATPURUSH
MAHALAXMI
GROUP**
a company committed to quality



7796888838 | 9923888838

web www.satpurushmahalaxmi.com